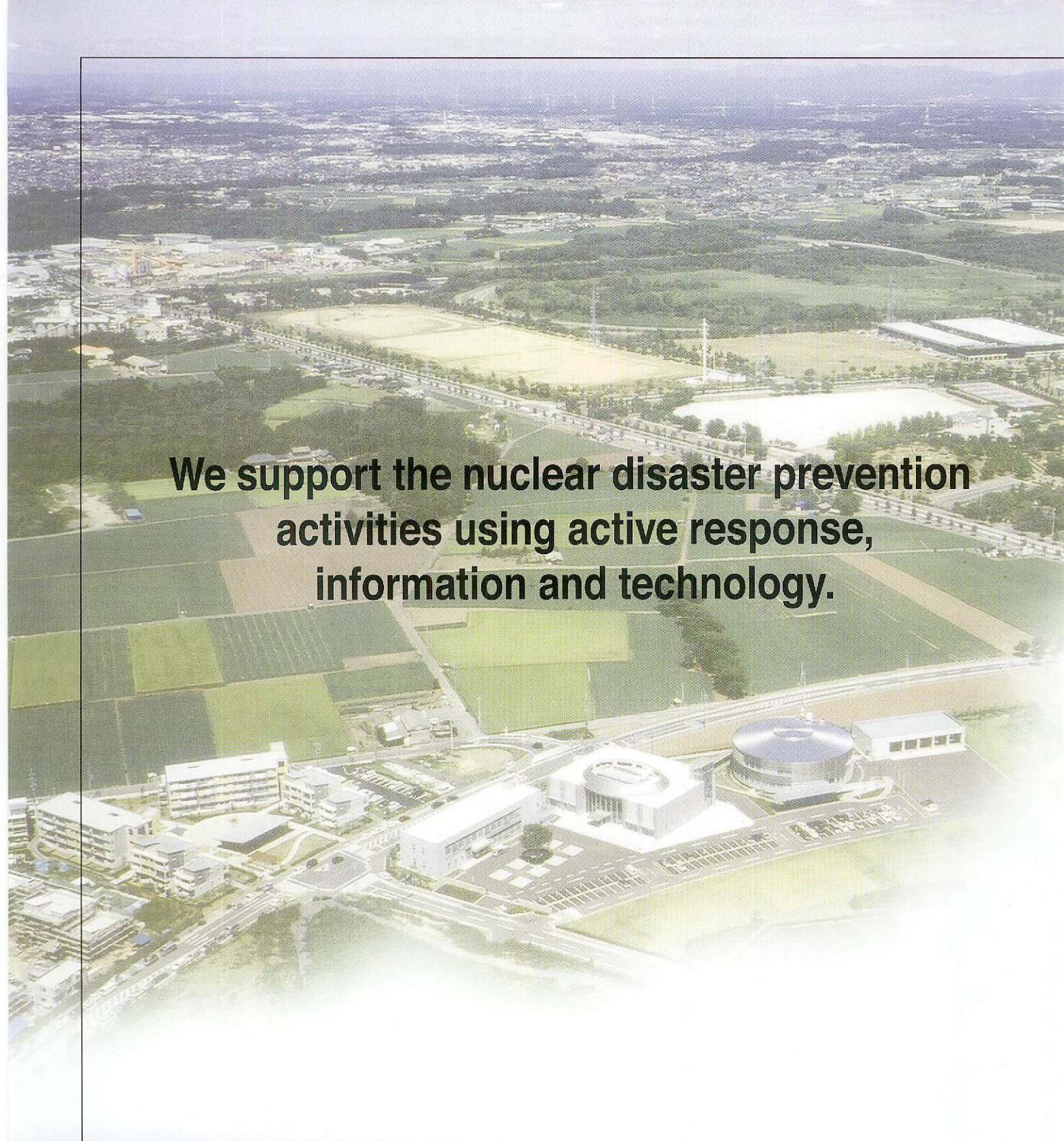




# **Nuclear Emergency Assistance & Training Center**

**Japan Atomic Energy Agency**





**We support the nuclear disaster prevention activities using active response, information and technology.**

- ☐ Providing information to promote disaster prevention activities
- ☐ Dispatching specialists and providing emergency equipments and materials
- ☐ Providing monitoring equipments for emergencies and supporting monitoring activities
- ☐ Responding accidents in transportation of nuclear fuel
- ☐ Providing training and exercises for disaster prevention

### **About the Nuclear Emergency Assistance & Training Center**

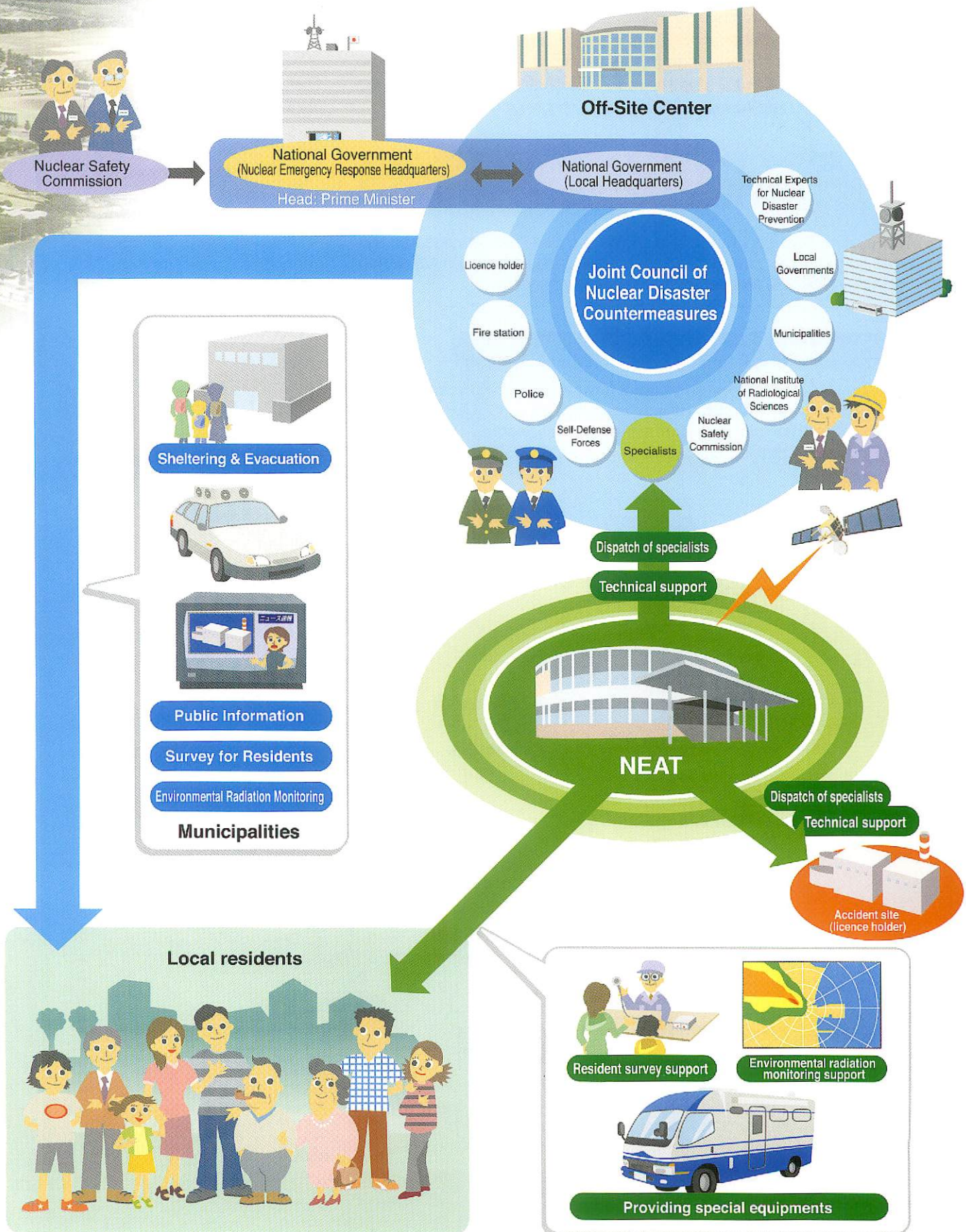
The Japan Atomic Energy Agency (JAEA) provides technical support to the national government, local governments, police, fire station and licence holder, etc. JAEA is Designated Public Organization conforming to the Basic Law on Emergency Preparedness and the Basic Plan for Disaster Countermeasures. The Nuclear Emergency Assistance & Training Center (to be abbreviated as NEAT hereafter) has been established in Hitachinaka-city of Ibaraki Prefecture, and Tsuruga-city of Fukui Prefecture, as the base facilities for activities to supply technical support.



# Nuclear Emergency Assistance & Training Center

Disaster  
Prevention  
Activities

NEAT provides technical support activities when an emergency occurs, to an off-site center where Joint Council of Nuclear Disaster Countermeasures has been set up. NEAT gives this Council “technical advice and information”, as well as performing “dispatch of specialists”, “supply of emergency equipments and materials”, and “support for monitoring”.





# Overview of NEAT System

## Providing effective support activities with reliable information and system technology:

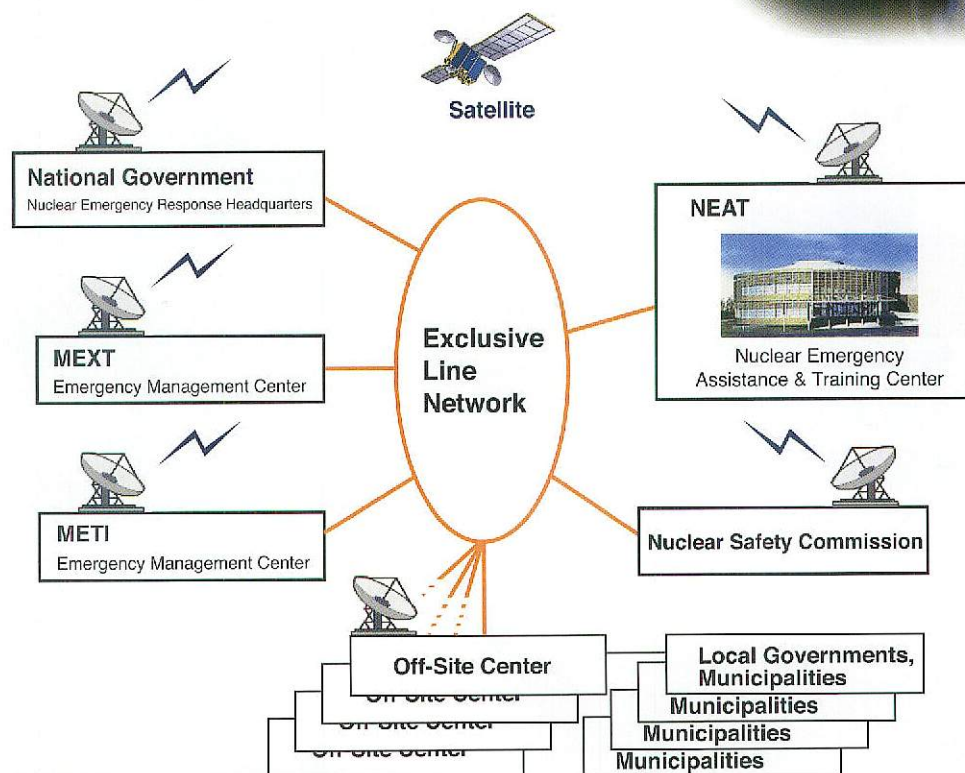
NEAT is equipped with various simulation devices used for information sharing, analysis and assessment to provide technical support in emergency by specialists registered for each special field beforehand. In addition, NEAT provides information communication devices to supply information to related organizations, such as off-site centers. NEAT can also respond to technical inquiries from the general public, and has a system to confirm press releases.

### Information Communication Network System

This system consists of exclusive communication lines, phones and two types of satellite communications. This configuration ensures that communications will always be secure whatever happens.

#### Nationwide Communication Network

Japan has set up a disaster network to strengthen communications and contact between disaster prevention organizations. NEAT employs this network to maintain close contact with all responding organizations by means of data communications, FAX and TV conference systems.



#### Communication Backup using Satellite

NEAT is equipped with satellite phones using central emergency radio and emergency phones using the Local Authorities Satellite Communications (LASCOM). These phones ensure stable communications with national organizations, local governments and off-site centers. Communications via INMARSAT are also possible.

#### INMARSAT:

The International Maritime Satellite Organization is a communication satellite used for mobile communications, with ships, airplanes, vehicles, etc.







Geographical Information System

### Example of GIS data

### ■ Telephone Service System

The diagram illustrates the NEAT system workflow. On the left, 'Local residents' are shown in a circle. An arrow labeled 'Question' points from them to a box representing 'Local Government (Emergency response headquarters, etc.)'. Inside this box is an illustration of a person at a desk. An arrow labeled 'Answer' points from the box back to the residents. A long arrow labeled 'Answer to technical inquiry' points from the box to the right. Above this long arrow, the text 'Transfer of question requiring expert answer' is written. On the far right is a photograph of the NEAT control room, showing several computer workstations with monitors and keyboards, and a person working at one of the stations. The word 'NEAT' is written in large letters above the photo.





# Special Equipments for Emergency Preparedness

NEAT supplies special equipments to support disaster prevention activities at local sites.



## Special Vehicles



NEAT maintains the following special vehicles: Body surface contamination monitoring vehicle, whole body counting vehicle, decontamination vehicle, environmental monitoring vehicle, command vehicle, and equipment and material transportation vehicle.



### Body Surface Contamination Monitoring Vehicle:

Equipped with two instruments that can simultaneously measure radioactive material, using 16 detectors.





#### Whole Body Counting Vehicle:

Equipped with a high-precision measuring instrument that can measure whether or not radioactive material has been ingested or inhaled.



#### Decontamination Vehicle:

Equipped with shower facilities that can wash away radioactive material if adherence to body is found.



#### Command Vehicle:

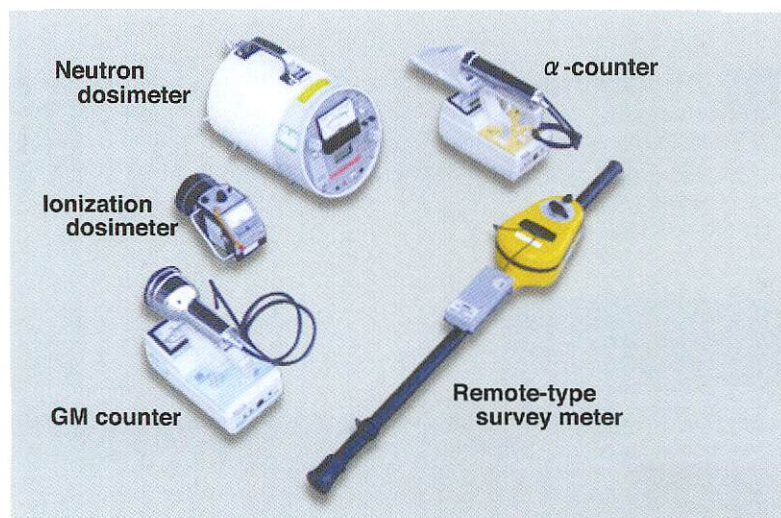
Equipped with instruments to promptly collect information at disaster site in order to command properly.



#### Environmental Monitoring Vehicle

## Radiation Measuring Instruments

NEAT measures the dose and radioactive material of local residents and the environment.

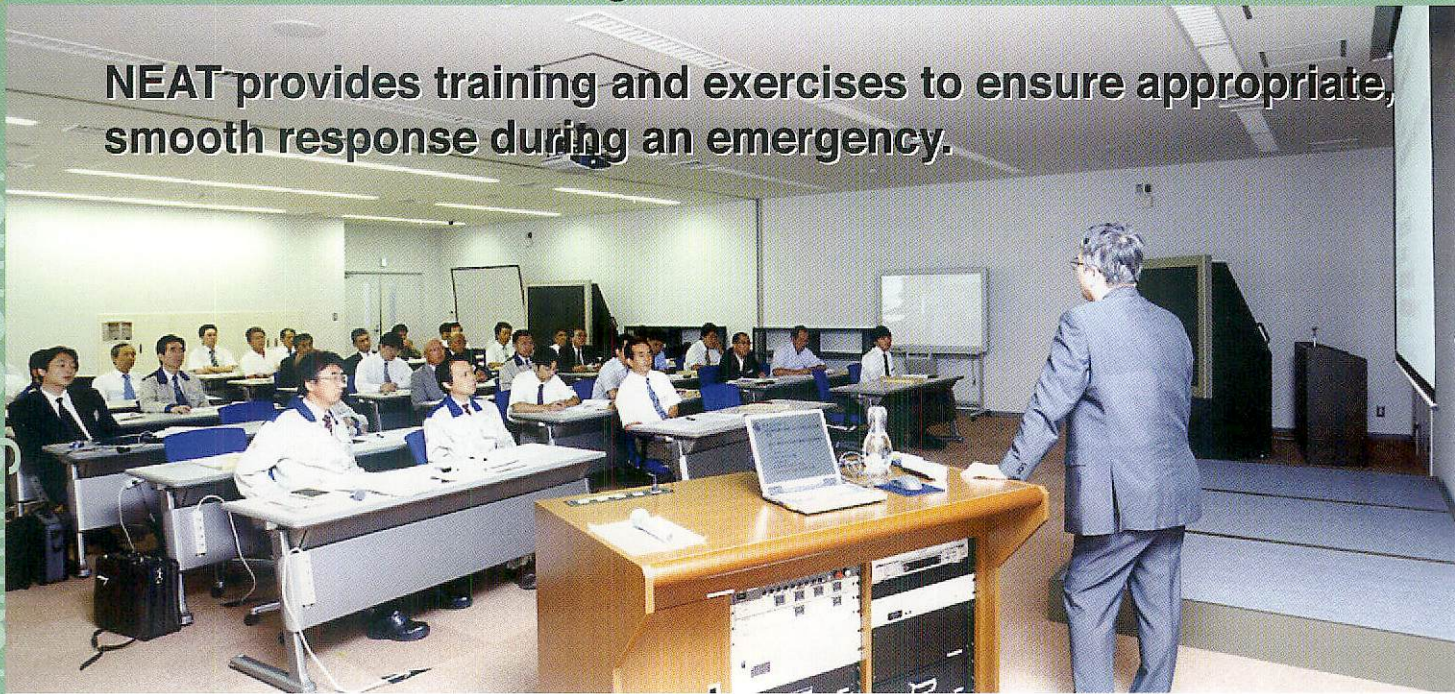


#### Survey for Residents



# NEAT Activities during Normal Times

**NEAT provides training and exercises to ensure appropriate, smooth response during an emergency.**



## ●● Fostering Emergency Responding Personnel

NEAT organizes various lectures and training concerning nuclear disaster prevention for those personnel taking an active part in emergency response organizations, such as off-site centers, and national government, local governments, police, fire station and licence holder.

### ☐ Basic Training in Nuclear Emergency Response

NEAT provides training consisting of lectures and training on the basics of risk management, the basics of public information, and emergency planning for effective disaster prevention exercises.

### ☐ Training for Technical Experts

NEAT trains Technical Experts for Nuclear Disaster Prevention who will play important roles in emergencies, emphasizing initial response procedures and preparation during normal times. It also gives practical training to the police, fire station and Self-Defense Forces who are engaged in disaster prevention activities around a disaster site: These include radiation protection and handling of equipments.

### ☐ Training for Specialists

The specialists who perform support activities when a nuclear emergency arises must be capable of various responses, including activities in NEAT, off-site centers and around a disaster site. NEAT provides training and exercises to ensure effective response.

## ●● Collection and Analysis of information

NEAT collects information that support the disaster prevention activities at off-site centers even during normal times. It also maintains a database so that support using the data is constantly available.



## Participating in Disaster Prevention Exercise

NEAT participates in disaster prevention exercises that are held by the national government, local governments and licence holder. NEAT also takes part in planning and application of the exercises.



**The photos show the comprehensive nuclear emergency exercise in Ibaraki Prefecture:**

- Top right : "Information collection area" in NEAT
- Middle : "Joint Council of Nuclear Disaster Countermeasures" in Ibaraki Nuclear Off-Site Center
- Bottom : Heliport in NEAT

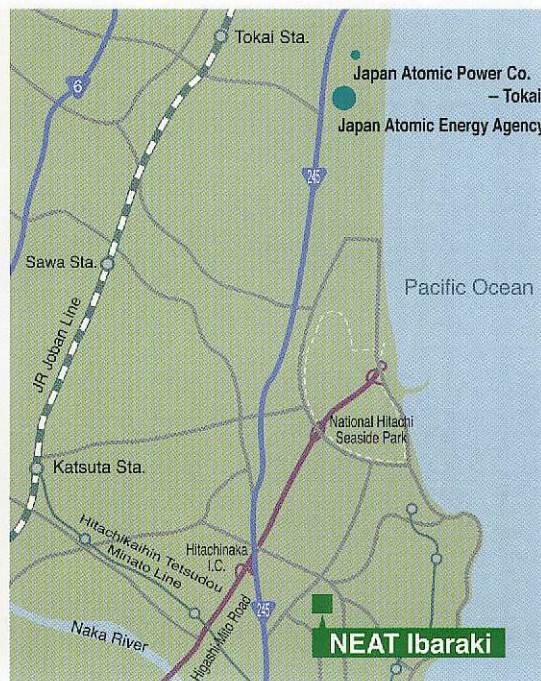


# Overall Layout of NEAT Facilities and Maps

## NEAT Ibaraki

NEAT Ibaraki is located in the vicinity of JAEA to make optimum use of its specialists, facilities and equipments.

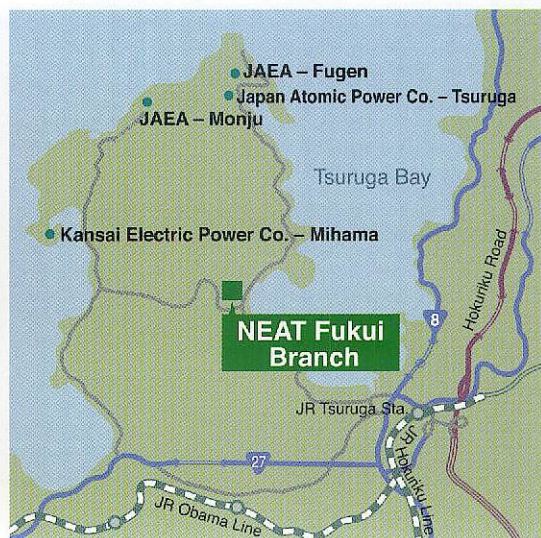
NEAT Ibaraki is located next to the Ibaraki Off-Site Center on the same premise, to ensure that emergency response will be smoothly performed.



※ Transfer to the Hitachikaihjin Tetsudou Minato Line at Katsuta Station of JR Joban Line, and get off the train at Nakaminato Station. Approx. 15 minutes from Katsuta Station or 10 minutes from Nakaminato Station by taxi.

## NEAT Fukui Branch

NEAT Fukui Branch is located in the vicinity of JAEA in Tsuruga district to make optimum use of its specialists, facilities and equipments.

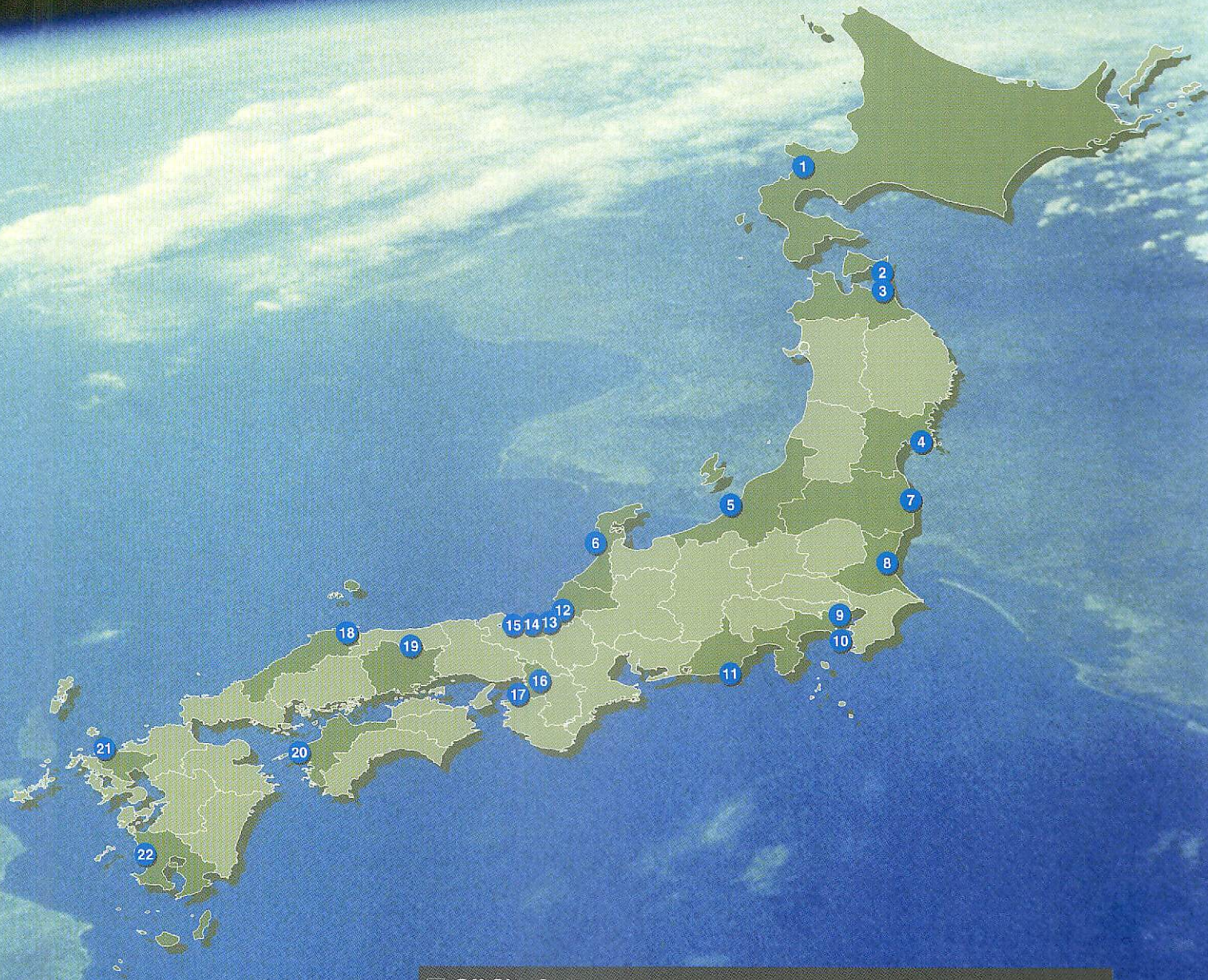


※ Approx. 30 minutes from JR Tsuruga Station by taxi.



# Locations of Off-Site Centers in Japan

NEAT Ibaraki and Fukui Branch share information through the information network with 22 Off-Site Centers, and provides appropriate support while cooperating with the disaster prevention specialists at the National government and local sites.



## Off-Site Centers

Facilities where the national government, local governments, and licence holder, etc. will gather in nuclear emergency, located near the nuclear facilities:

1 Hokkaido Kyowa-cho	9 Kanagawa Kawasaki-city	17 Osaka Kumatori-cho
2 Aomori Higashidoori-mura	10 Kanagawa Yokosuka-city	18 Shimane Matsue-city
3 Aomori Rokkasho-mura	11 Shizuoka Omaezaki-city	19 Okayama Kagamino-cho
4 Miyagi Onagawa-cho	12 Fukui Tsuruga-city	20 Ehime Ikata-cho
5 Niigata Kashiwazaki-city	13 Fukui Mihama-cho	21 Saga Karatsu-city
6 Ishikawa Shika-machi	14 Fukui Ooi-cho	22 Kagoshima Satsumasendai-city
7 Fukushima Ookuma-machi	15 Fukui Takahama-cho	
8 Ibaraki Hitachinaka-city	16 Osaka Higashioosaka-city	





## **Nuclear Emergency Assistance & Training Center**

---

- **NEAT Ibaraki** Japan Atomic Energy Agency, NEAT Ibaraki  
11601-13 Nishi-kyusanbugyo, Hitachinaka-city, Ibaraki 311-1206  
Phone: 029-265-5111 Fax: 029-265-5110
- **NEAT Fukui Branch** Japan Atomic Energy Agency, NEAT Fukui  
6-2 Oonishidai, Nouma #54, Tsuruga-city, Fukui 914-0833  
Phone: 0770-20-0050 Fax: 0770-20-0711