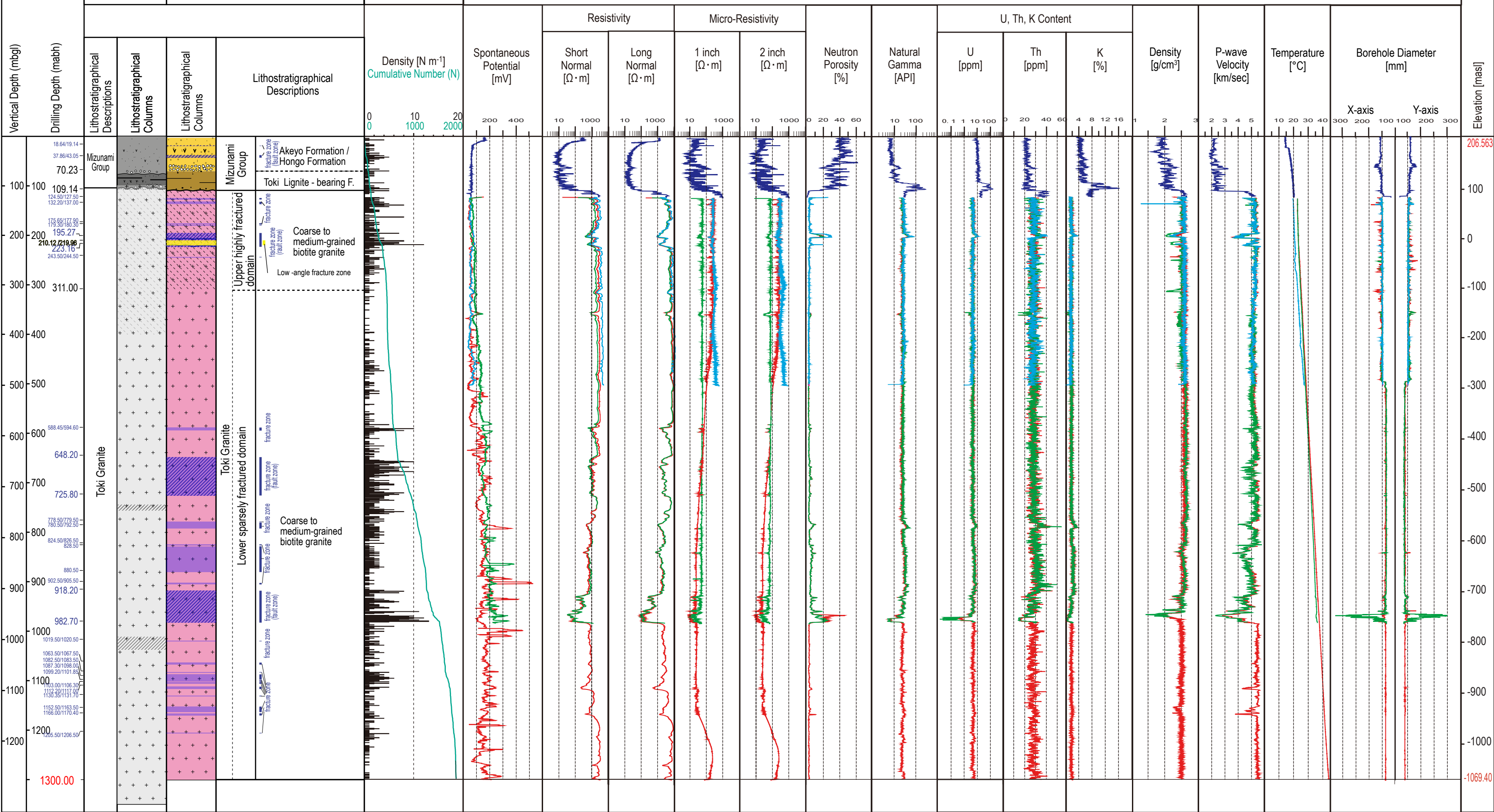


Overview of the MIZ-1 Geophysical Logging

Coordinates x: -68.867.674, y: 6,503.6791, z: 206.563

	Geological Predictions	Geological Observations	Fracture	Geophysical Logging	
--	------------------------	-------------------------	----------	---------------------	--



- 1st geophysical logging
 2nd geophysical logging
 3rd geophysical logging (After mud-drilling from 968.82 to 984.17mab and cementing from 919.83 to 961.84mab)
 4th geophysical logging (After mud-drilling from 968.82 to 1300.0mab and cementing from 920 to 984mab)

Fault zone
 Fracture zone
 Low -angle fracture zone

Legend for Figure 10:

- 1st geophysical logging (Blue line)
- 2nd geophysical logging (Cyan line)
- 3rd geophysical logging (After mud-drilling from 968.82 to 984.17mab and cementing from 919.83 to 961.84mab) (Green line)
- 4th geophysical logging (After mud-drilling from 968.82 to 1300.0mab and cementing from 920 to 984mab) (Red line)
- Fault zone (Hatched pattern)
- Fracture zone (Light blue shaded area)
- Low -angle fracture zone (Yellow shaded area)