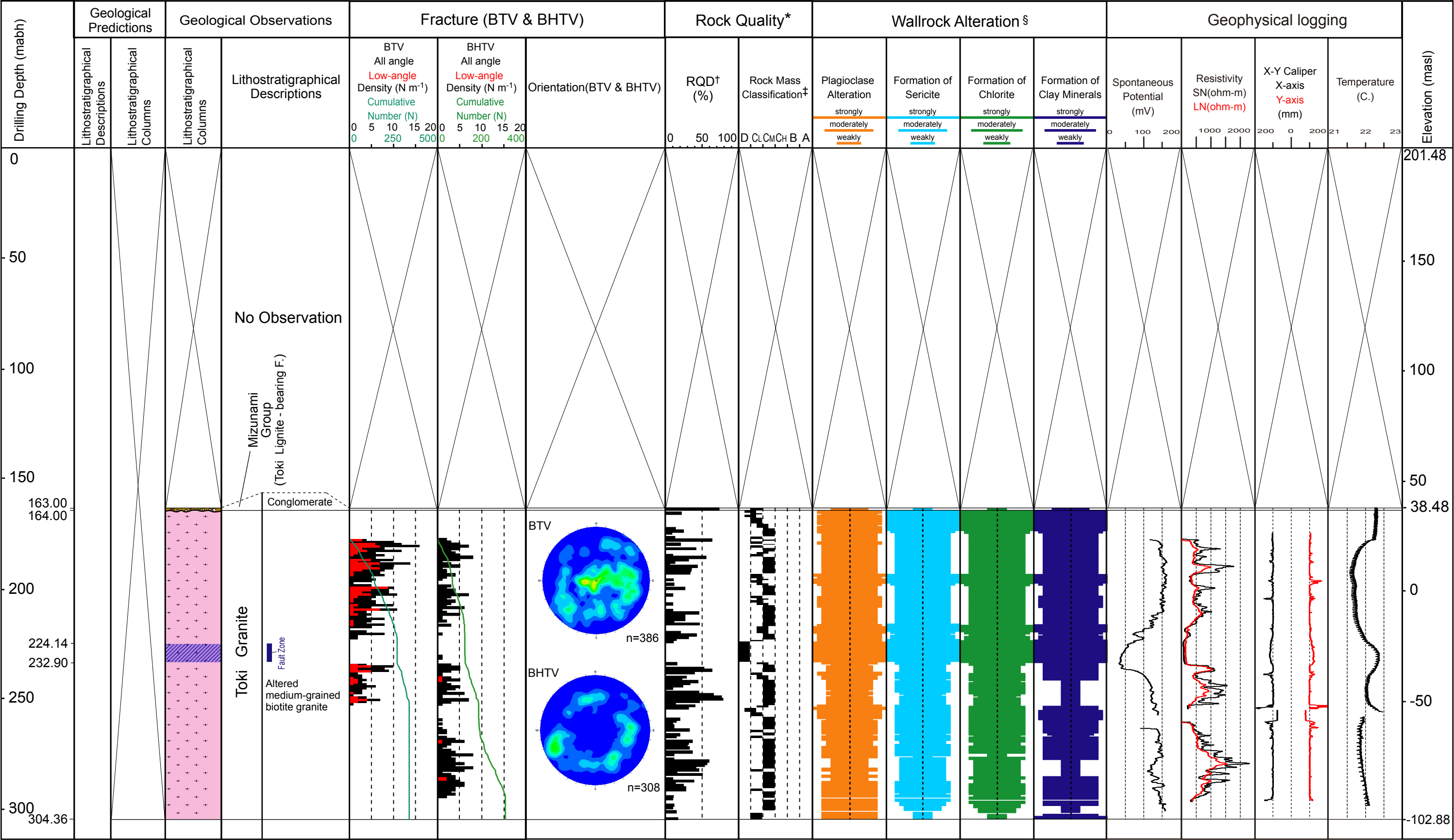


Overview of the 05ME06 On-site Core Description

Coordinates x: -68,995.44, y: 6,437.41, z: 201.48



\* Rock Quality: n (core recovery over 90% in 1m drilling)  
†RQD: Rock Quality Designation; defined by the percentage of the sum of lengths of cores over 10cm in the whole core length in 1m drilling  
‡Rock Mass Classification: Degree of physical disintegration by weathering/alteration in 6 classes; roughly, A (very fresh), B (slightly weathered/alterd), CH (weathered/alterd except quartz), CM (moderately weathered/alterd), CL (highly weathered/alterd), D (extremely weathered/alterd)  
§Wallrock Alteration: Degree of alteration; classification simplified from on-site core description manual (JNC, 2002)