



INDONESIA CENTER OF EXCELLENCE  
ON  
NUCLEAR SECURITY AND EMERGENCY PREPAREDNESS  
  
(I-CoNSEP)

Sugeng SUMBARJO  
Deputy Chairman for Licensing and Inspection  
BAPETEN

Tokyo, 3 December 2014



# Contents

1. Introduction

2. Model of I-CoNSEP

3. Roles of I-CoNSEP

4. National Coordination

5. Implementation

6. Road Map



# Introduction





# Introduction

## Vulnerability in illicit trafficking in Indonesia

- ❑ Archipelagic state,
- ❑ Located between Asia and Australia continent and Hindia and Pacific Ocean,
- ❑ Consist of 17.508 islands, 18 international airports and 21 international seaports
- ❑ History of civil unrest and terrorist attacks: potential risk in security.



# Introduction

## Global issues of nuclear security and emergency preparedness:

- ❑ Security: terrorist sabotage and illicit trafficking
- ❑ Emergency Preparedness: Nuclear Instalation, Radiation Facilities, Orphan Source, and trans-boundary release
- ❑ Indonesia can contribute to support of regional nuclear security and nuclear emergencies



# Model of I-CoNSEP

## I-CoNSEP is a combination of various models of existing CoE:

- IAEA Nuclear Security Support Center ( NSSC ) which provides training and technical assistance support (maintenance and calibration tool) to support the task of all Competent Authorities.
- IAEA Emergency Preparedness and response Capacity Building Center which is a training center in the field of nuclear preparedness.

## I-CoSEP focus is coordination among national stakeholders to build commitment:

- Develop the Infrastructures Emergency Preparedness and response and Nuclear Security but avoid duplication with existing resources in other agencies.



# Model of I-CoNSEP

- ❑ I-CoNSEP does not replace the roles and responsibilities of the competent authorities, but rather support the implementation of their duties, particularly in the area of nuclear security and emergency preparedness.
- ❑ I-CoNSEP is a co-ordinated endeavour among all relevant stakeholders. Thus every stakeholder has ownership and stake in the project.
  - ❖ No duplication and overlap between facilities nor responsibilities;
  - ❖ BAPETEN acts as the co-ordinator.



# Role of I-CoNSEP

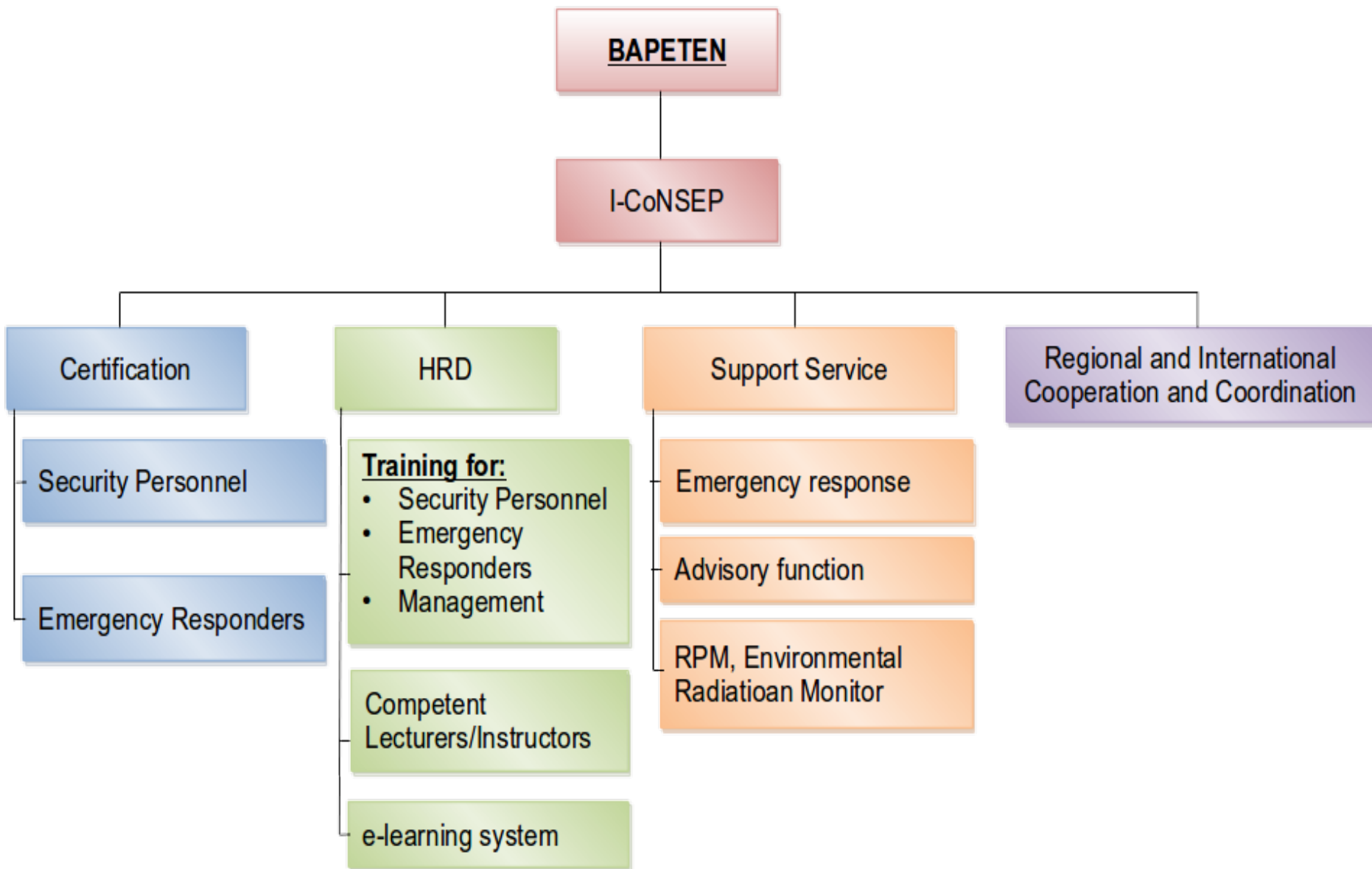
## I-CoNSEP focus on:

- ❑ Human Resource Development (HRD)
- ❑ Technical support and scientific support
- ❑ Policy-making support
- ❑ Security and emergency Data provider
- ❑ Optimized coordination for National and international network





# National Coordination





# Implementation

## Online Radiation Monitoring

### Application

Area monitoring

Ring monitoring systems around nuclear facilities

Nationwide monitoring networks

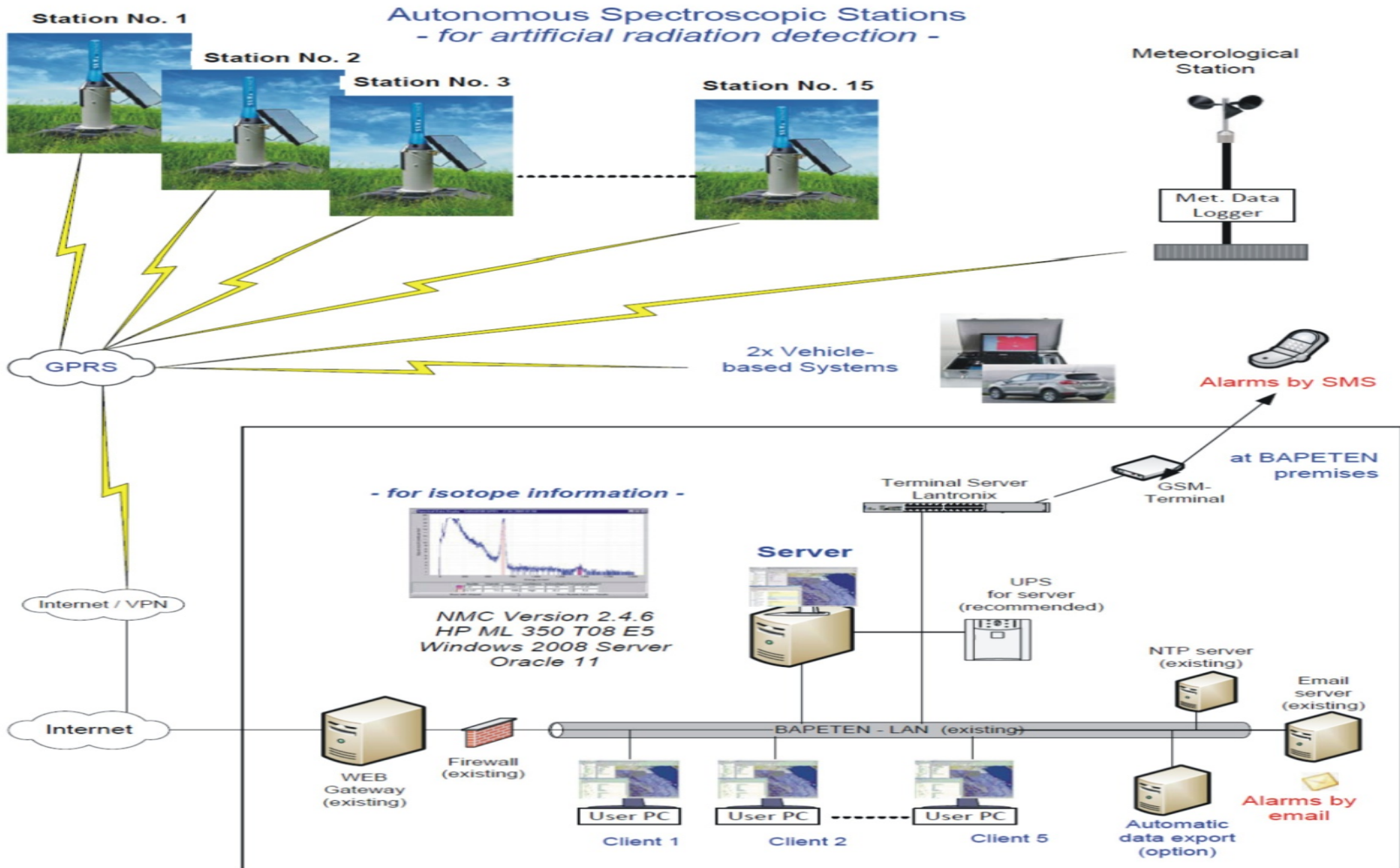
Laboratory and system monitoring

Location : Serpong, Bandung & Yogyakarta (2013)



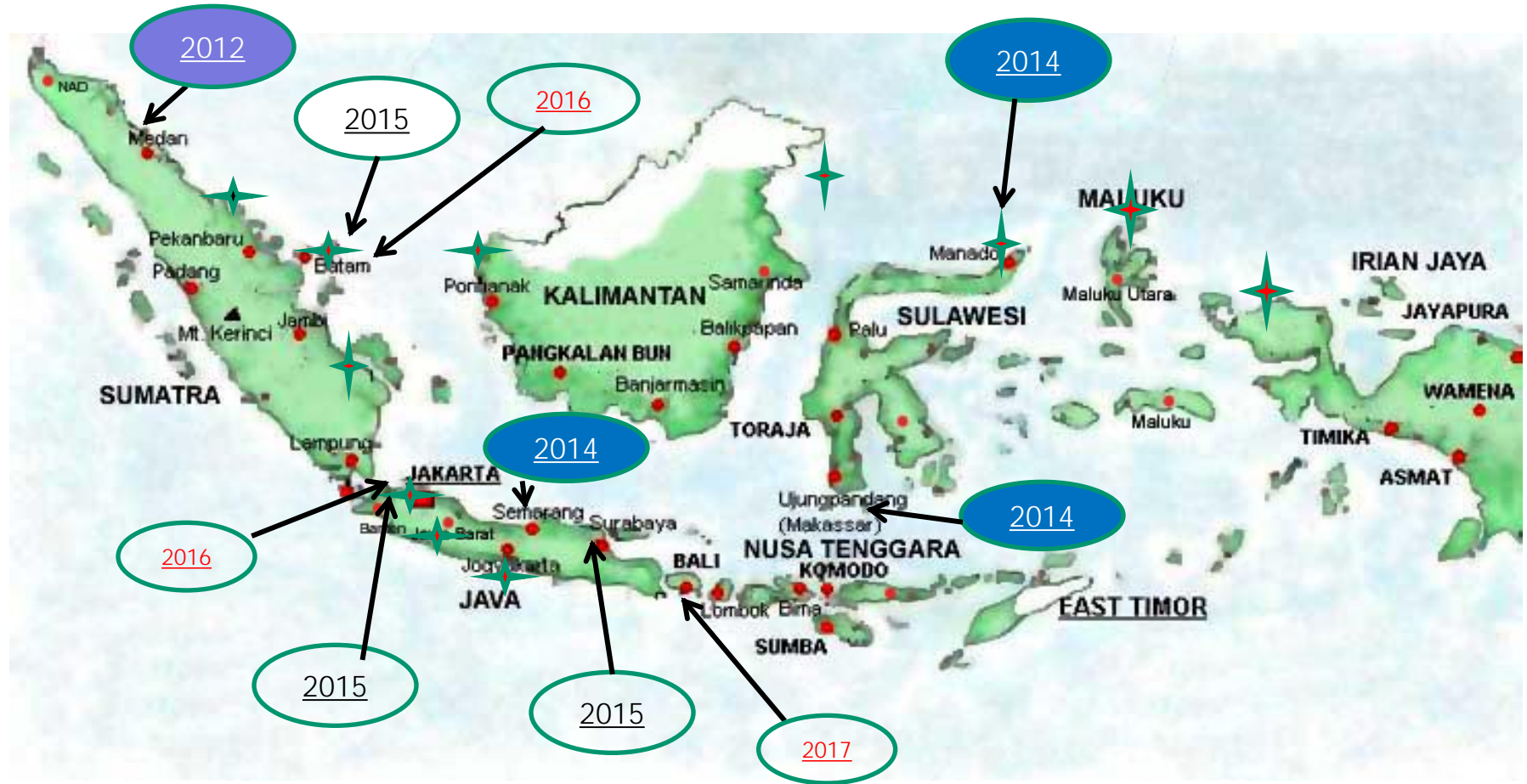



## Environmental Radiation Monitoring and Early Warning System (ERMEWS) for Nuclear Agency of Indonesia (BAPETEN)





# Plan to Install RPM in 2012 – 2017



 RPM installed and owned by Custom

 RPM installed by IAEA donor



# Road Map of I-CoNSEP

<u>Tanggal</u>	<u>Kegiatan</u>
<u>2015-2016</u>	<b><u>Development of EPR Team</u></b>
<u>2014-2017</u>	<b><u>Install and develop security RPM in the Potential sea ports</u></b>
<u>2014-2017</u>	<b><u>Install and development of online Enviromental Radiation Monitor</u></b>
<u>2015</u>	<b><u>Establised of national nuclear emergency response center</u></b>
<u>2015</u>	<u>Joint to RANET (radiation survey, source search and recovery, environmental sampling and analysis, dose assessment, medical support).</u>
<u>2016 - 2017</u>	<b><u>Host for Regional traning of EPR</u></b>



**THANK YOU**

THANK YOU

**Terima kasih**

TERIMA KASIH